



Digitally signed by
James B. Euell
Date: 2023.08.28
11:18:30 -04'00'

ECO POMPAÑO TOWNHOMES

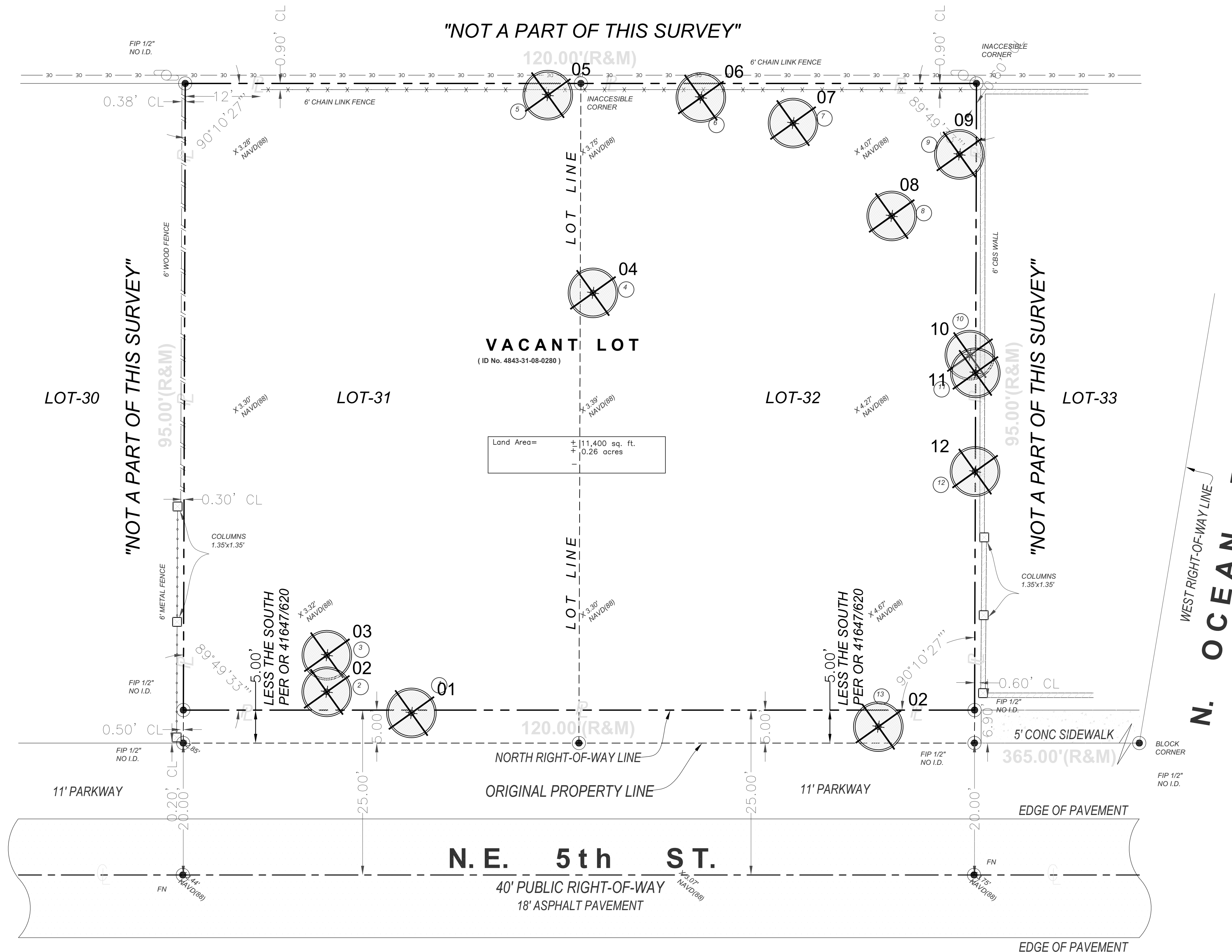
3225 NE 5TH STREET
POMPAÑO BEACH FLORIDA 33062

PROJECT NAME & LOCATION:

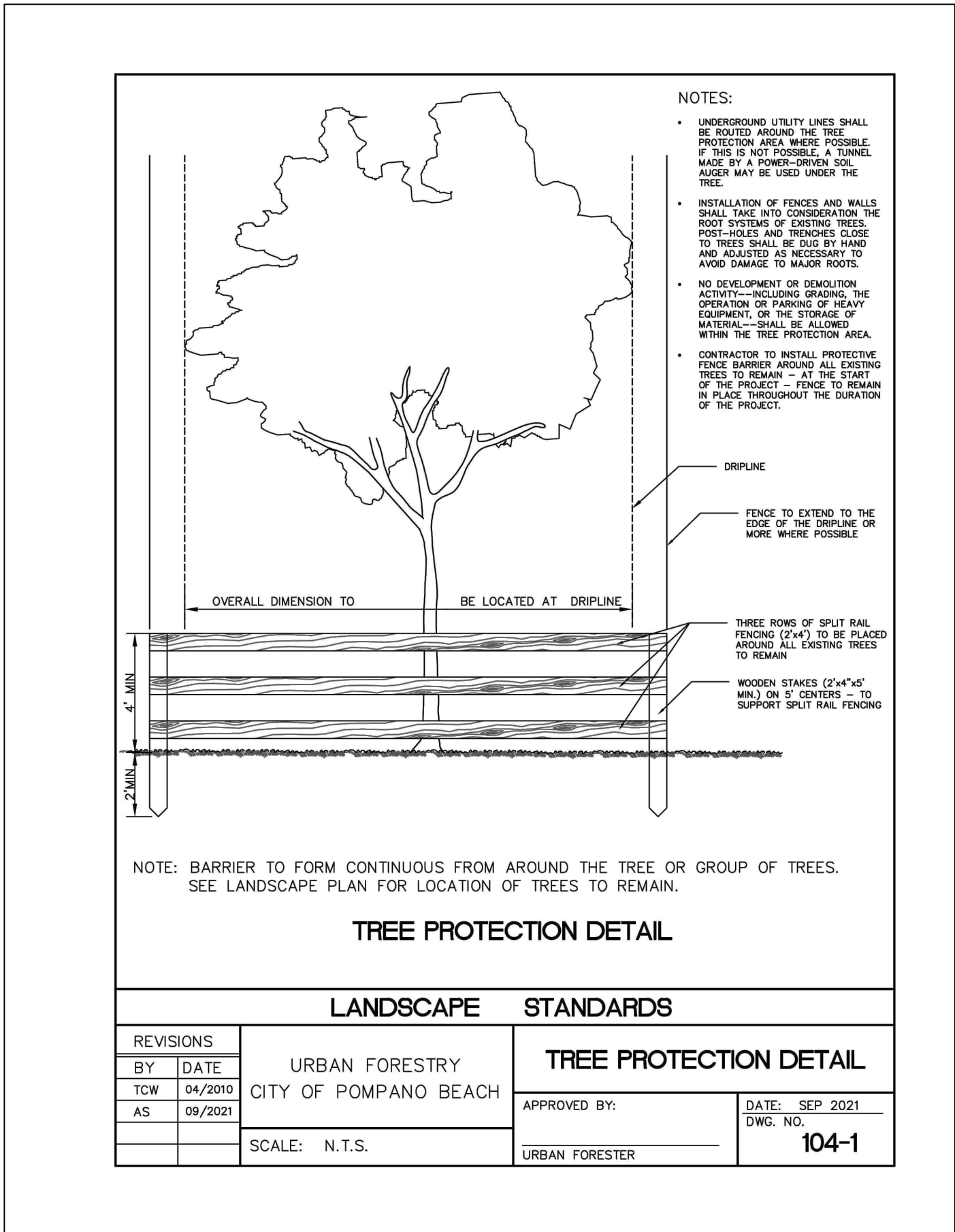
DISTRIBUTION:	DATE:

DRAWING NAME:
TREE
DISPOSITION
PLAN

DRAWING NUMBER:
PZ24-12000008



LEGEND	
	EXISTING TREE /PALM TO REMAIN
	EXISTING TREE/ PALM TO BE REMOVED
	EXISTING TREE / PALM TO BE RELOCATED



Existing Tree Survey									
KEY	BOTANICAL NAME	COMMON NAME	CALIPER (INCHES)	HEIGHT (FEET)	CANOPY (FEET)	CONDITION	DISPOSITION	VALUE	COMMENTS
1	Casuarina equisetifolia	Australian Pine	20	50	40	Poor	Remove	N/A	Invasive
2	Casuarina equisetifolia	Australian Pine	16	35	30	Poor	Remove	N/A	Invasive
3	Cocos nucifera	Coconut Palm	8	16	15	Fair	Remove		
4	Casuarina equisetifolia	Australian Pine	23	50	40	Poor	Remove	N/A	Invasive
5	Cupaniopsis anacardioides	Carrotwood Tree	7	20	15	Good	Remove		Invasive
6	Bischofia javanica	Bishopwood	30	60	30	Good	Remove		Invasive
7	Sabal Palmetto	Sabal Palm	14	8	8	Good	Remove		
8	Coccoloba uvifera	Seagrape	16	25	25	Fair	Remove		
9	Casuarina equisetifolia	Australian Pine	21	60	40	Poor	Remove	N/A	Invasive
10	Casuarina equisetifolia	Australian Pine	7	30	20	Poor	Remove	N/A	Invasive
11	Casuarina equisetifolia	Australian Pine	7	30	20	Poor	Remove	N/A	Invasive
12	Casuarina equisetifolia	Australian Pine	15	40	30	Poor	Remove	N/A	Invasive
13	Cocos nucifera	Coconut Palm	10	30	15	Fair	Remove		

NOTE: All height and canopy numbers are in feet. Palm height is overall height.

- CITY OF POMPAÑO NOTES:
- Trees must be protected during entire project until completion.
 - *No tree/palm roots or parts shall be cut or damaged due to construction activities on site. If there are any tree/palm root conflicts, contact Urban Forestry Staff for assistance 954-786-452P

PALMS AND TREES MITIGATION				
3 non specimen Coconut palms with a diameter of 32" to be removed. The proposed landscape plan has 3 Additional Sabal palms to cover the required mitigation.				
1 non specimen tree to be removed. The proposed landscape plan has 6 additional trees to cover the required mitigation.				
Please see tree replacement breakdown below:				
QTY				
2	Coccoloba diversifolia / Pigeon Plum	3 Inches each	9 Inches	
4	Tabebuia heterophylla	3 Inches each	9 Inches	
3	Sabal Palmetto / Sabal Palm	12 Inches each	36 Inches	
TOTAL			54 Inches	

